

# FOR SALE

## 950 ST. ELIZABETH DRIVE, SAN JOSE, CA



RARE OPPORTUNITY FOR A SCHOOL OR FAITH BASED ORGANIZATION  
TO PURCHASE A PROPERTY THAT IS MOVE-IN READY WITH  
EXPANSION CAPABILITY AND DEVELOPMENT POTENTIAL

### PROPERTY FEATURES:

- Built in 1964
- Building Size: 22,625 square feet
- Gross Area: Approximately 4.06 acres
- Net Area: Approximately 3.68 acres
- Public Water and Sewer
- Parking: 40+ onsite, parking lot expansion potential, and street parking
- 8 classrooms
- Cafeteria & Dining Rooms
- Auditorium & Music Room
- Ample play areas and structures
- Large rear yard lot with variety of potential uses



For more information, please contact:



**Dominic Dutra**  
(510) 366-9931  
ddutra@dcgrealestate.com  
DRE Lic# 00963281



**Jamil Muchell**  
(925) 464-1979  
jmuchell@dcgrealestate.com  
DRE Lic# 01763115



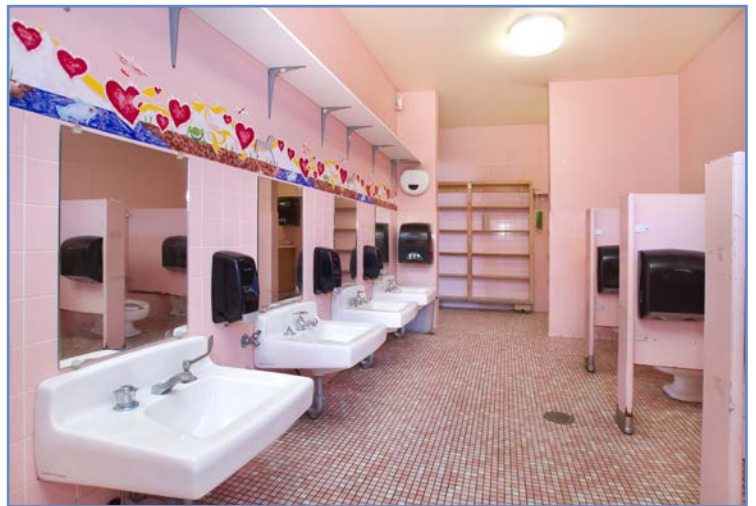
7600 Dublin Blvd., Suite 275  
Dublin, CA 94568  
www.dcgrealstate.com

The information contained herein has been obtained from sources deemed reliable, and has not been independently verified by DCG Commercial. No representation or warranty is made with respect to the accuracy or completeness of the information provided herein. Any and all projections, opinions, assumptions or estimates are used for example only and do not necessarily reflect the current or future performance of the property. Linear and area measurements are approximate, often are inaccurate, and should be confirmed by a surveyor. Prospective purchasers, lessees and other interested parties should have experts of their own selection thoroughly inspect the property in its entirety and independently verify all information. Real estate brokers are not qualified to act as or to select experts with regard to legal, tax, environmental, construction or other such matters.



# FOR SALE

## 950 ST. ELIZABETH DRIVE, SAN JOSE, CA



For more information, please contact:



**Dominic Dutra**  
(510) 366-9931  
ddutra@dcgrealestate.com  
DRE Lic# 00963281



**Jamil Muchell**  
(925) 464-1979  
jmuchell@dcgrealestate.com  
DRE Lic# 01763115



7600 Dublin Blvd., Suite 275  
Dublin, CA 94568  
www.dcgrealstate.com

The information contained herein has been obtained from sources deemed reliable, and has not been independently verified by DCG Commercial. No representation or warranty is made with respect to the accuracy or completeness of the information provided herein. Any and all projections, opinions, assumptions or estimates are used for example only and do not necessarily reflect the current or future performance of the property. Linear and area measurements are approximate, often are inaccurate, and should be confirmed by a surveyor. Prospective purchasers, lessees and other interested parties should have experts of their own selection thoroughly inspect the property in its entirety and independently verify all information. Real estate brokers are not qualified to act as or to select experts with regard to legal, tax, environmental, construction or other such matters.



# FOR SALE

## 950 ST. ELIZABETH DRIVE, SAN JOSE, CA



For more information, please contact:



**Dominic Dutra**  
(510) 366-9931  
ddutra@dcgrealestate.com  
DRE Lic# 00963281



**Jamil Muchell**  
(925) 464-1979  
jmuchell@dcgrealestate.com  
DRE Lic# 01763115



7600 Dublin Blvd., Suite 275  
Dublin, CA 94568  
www.dcgrealstate.com

The information contained herein has been obtained from sources deemed reliable, and has not been independently verified by DCG Commercial. No representation or warranty is made with respect to the accuracy or completeness of the information provided herein. Any and all projections, opinions, assumptions or estimates are used for example only and do not necessarily reflect the current or future performance of the property. Linear and area measurements are approximate, often are inaccurate, and should be confirmed by a surveyor. Prospective purchasers, lessees and other interested parties should have experts of their own selection thoroughly inspect the property in its entirety and independently verify all information. Real estate brokers are not qualified to act as or to select experts with regard to legal, tax, environmental, construction or other such matters.

# FOR SALE

## 950 ST. ELIZABETH DRIVE, SAN JOSE, CA



SITE PLAN

For more information, please contact:



**Dominic Dutra**  
(510) 366-9931  
ddutra@dcgrealestate.com  
DRE Lic# 00963281



**Jamil Muchell**  
(925) 464-1979  
jmuchell@dcgrealestate.com  
DRE Lic# 01763115



7600 Dublin Blvd., Suite 275  
Dublin, CA 94568  
www.dcgrealstate.com

The information contained herein has been obtained from sources deemed reliable, and has not been independently verified by DCG Commercial. No representation or warranty is made with respect to the accuracy or completeness of the information provided herein. Any and all projections, opinions, assumptions or estimates are used for example only and do not necessarily reflect the current or future performance of the property. Linear and area measurements are approximate, often are inaccurate, and should be confirmed by a surveyor. Prospective purchasers, lessees and other interested parties should have experts of their own selection thoroughly inspect the property in its entirety and independently verify all information. Real estate brokers are not qualified to act as or to select experts with regard to legal, tax, environmental, construction or other such matters.

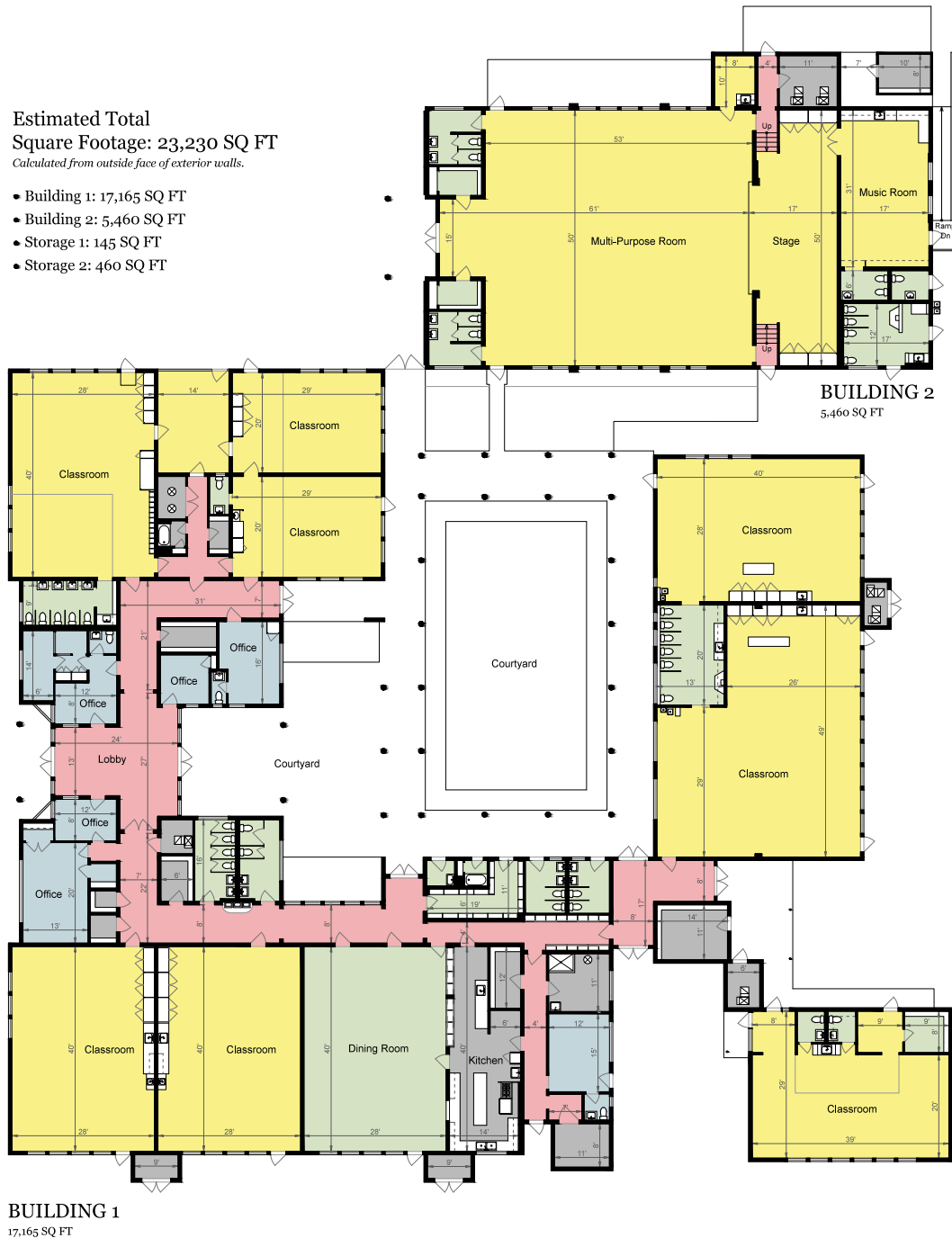


# FOR SALE

## 950 ST. ELIZABETH DRIVE, SAN JOSE, CA

Estimated Total  
Square Footage: 23,230 SQ FT  
*Calculated from outside face of exterior walls.*

- Building 1: 17,165 SQ FT
- Building 2: 5,460 SQ FT
- Storage 1: 145 SQ FT
- Storage 2: 460 SQ FT



For more information, please contact:



**Dominic Dutra**  
(510) 366-9931  
ddutra@dcgrealestate.com  
DRE Lic# 00963281



**Jamil Muchell**  
(925) 464-1979  
jmuchell@dcgrealestate.com  
DRE Lic# 01763115



7600 Dublin Blvd., Suite 275  
Dublin, CA 94568  
www.dcgrealstate.com

The information contained herein has been obtained from sources deemed reliable, and has not been independently verified by DCG Commercial. No representation or warranty is made with respect to the accuracy or completeness of the information provided herein. Any and all projections, opinions, assumptions or estimates are used for example only and do not necessarily reflect the current or future performance of the property. Linear and area measurements are approximate, often are inaccurate, and should be confirmed by a surveyor. Prospective purchasers, lessees and other interested parties should have experts of their own selection thoroughly inspect the property in its entirety and independently verify all information. Real estate brokers are not qualified to act as or to select experts with regard to legal, tax, environmental, construction or other such matters.